



CHAIR SHELL

- Wide back and flexible polypropylene seat provides ergonomic support.
- Flowing contemporary
- Smooth back allows for easy cleaning
- Grip handle for easy maneuvering, stacking and storage.

CHAIR SHELL

- 1" diameter, 18 gauge steel.
- Four available sizes 12", 14", 16" and 18".
- Two seat brackets of 16 gauge die-formed steel.
- Chairs can be stacked within like sizes.
- Frame is available in a powder coated silver, or a chrome finish.



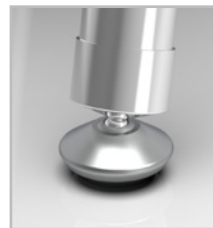
DESCRIPTION	OVERALL PRODUCT DIMENSIONS	DIMENSIONAL WIDTH	DIMENSIONAL LENGTH	DIMENSIONAL WEIGHT
Gogy 12"H chair	22.5"H x 16"W x 15"L	16"	15"	5.56 lbs
Gogy 14"H chair	24.5"H x 16"W x 16.7"L	16"	16.7"	5.78 lbs
Gogy 16"H chair	31.25"H x 16"W x 16.7"L	16"	19.75"	9.35 lbs
Gogy 18"H chair	33"H x 21"W x 20.5"L	21"	20.5"	9.82 lbs
Gogy 28"H stool	42.65"H x 21"W x 20.5"L	21"	20.5"	12.45 lbs

"A" shell fits 16", 18" and 28" chairs. "B" shell fits 12" and 14" chairs.

CHAIRS AVAILABLE IN 12", 14", 16", 18" AND STOOL 28"

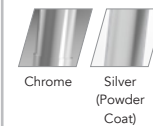


GLIDE SYSTEM



FRAME FINISHES

STOCK:



SHELL COLORS



STOCK:



SPECIAL (minimum quantity orders):

